

Clean in Place Systems

“CIP” Series

Product Description/Equipment Specifications

FLEXIBILITY

LATITUDE

ENGINEERING

EXECUTION

EXCELLENCE

*Process Water Systems designed with ultimate **FLEXIBILITY** in mind.*

Features at a glance:

- Quick Delivery, Installation and Start-Up
- Features a 316 Stainless Steel, Multi-Stage, Centrifugal Pump with a High Efficiency Motor



Photo is for illustrative purposes only

Mechanical Description:

The CIP system is mounted on a powder coated carbon steel cart. The CIP system includes a 316 SS booster pump, polyethylene tank, filter housing, flow meter, temperature gauge, pressure gauge. Also included are interconnecting hoses made of clear, polyester reinforced food grade tubing. The CIP system is pre-assembled, pre-wired and hydrostatically tested at the factory.

Electrical Description:

The CIP system is 115VAC and is equipped with a power cord designed to be plugged into a standard duplex receptacle; all integral electrical connections have been made at the factory. An on-board GFCI receptacle is provided for the power requirements of all system electrical components.

Physical Dimensions:

System Model Number	Length	Width	Height
CIPCRT	48"	24"	48"

Clean in Place Selection Matrix

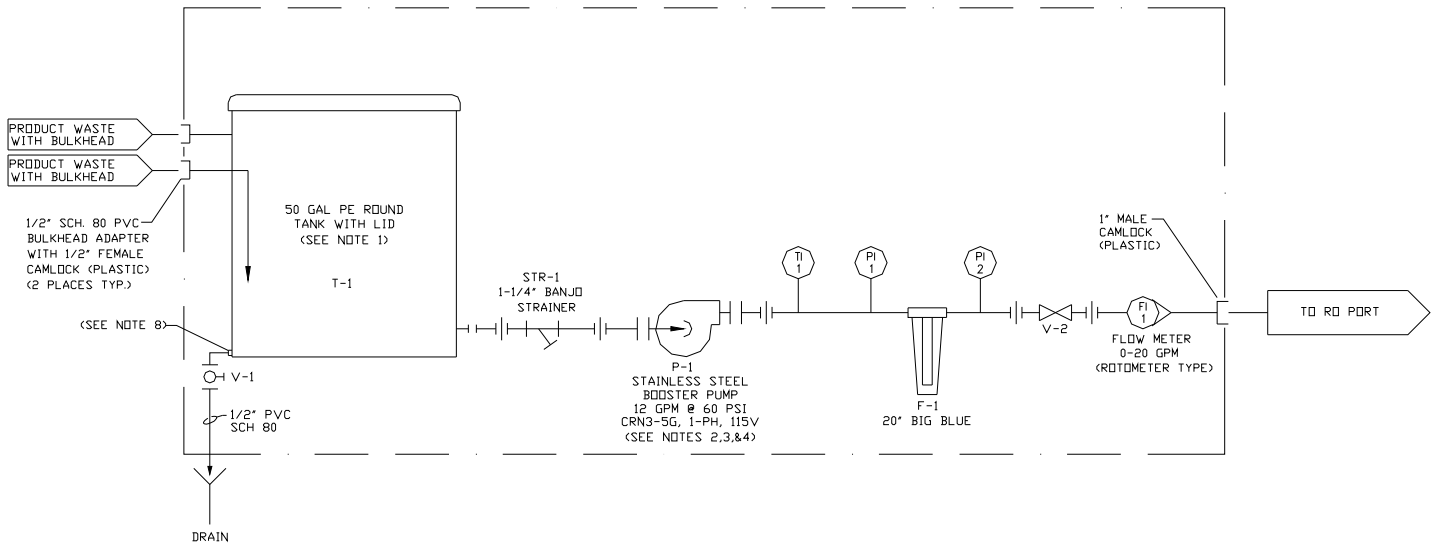
Select

EXAMPLE PART NUMBER

CIPCRT

FIELD 1	Clean in Place System	
	Code	Code Description
	CIPCRT	Clean in Place System

PROCESS & INSTRUMENTATION DIAGRAM



- NOTES:
1. CIP SKID MOUNTED ON CART WITH 4 CASTERS (MUST BE PAINTED USFILTER BLUE).
 2. 12FT - #14 CORD & PLUG.
 3. DN/OFF SWITCH.
 4. HOSPITAL GREEN DDT PLUG.
 5. INCLUDES (2) 1/2"x10'-0" NYLON BRAIDED HOSES WITH MALE AND FEMALE CAMLOCKS, (2) LOOSE SHIPPED 1/2" MALE CAMLOCK FNPT ADAPTERS. (MALE CAMLOCK AND FNPT)
 6. INCLUDES (1) 1"x10'-0" NYLON BRAIDED HOSE WITH FEMALE CAMLOCK AND 1" VICTAULIC ADAPTER.
 7. SKID MUST FIT THROUGH 3'-0" DOORWAY.
 8. 1/2" FNPT COUPLING WELDED IN LOWEST POINT ON SIDE SHELL.